



CHANGING SPACES CAMPAIGN

Advocating For Universal Changing Stations
Everyone Deserves Dignity

What is A Universal Changing Table?

- A changing table that can accommodate people of all ages, no matter their height and weight, or abilities.
- Height-Adjustable, holds up to 400 lbs., with the changing surface measuring at least 70 inches by 30 inches.

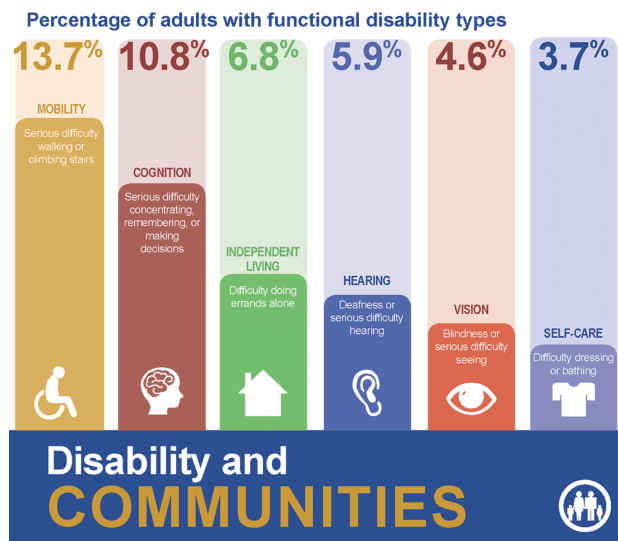


Photos from Max-Ability.com



The Problem

- **Baby Changing tables are too small for teens and adults to use.**
- Many people need assistance with self care, such as toileting, diaper changing, addressing colostomies, using catheters, etc., while away from home.
- Individuals are being changed in unhygienic, uncomfortable, undignified, and unsafe places such as bathroom floors.
- Lack of proper adult changing spaces affects:
 - Aging individuals
 - Individuals with disabilities & medical conditions
 - Their family members, friends and caregivers who cannot spend time in the community with their loved ones.



Source: CDC.gov

The Solution

- Install adult-sized changing tables, also known as Universal changing tables, as they can accommodate people of all ages and sizes.

NO



NO



Everyone in our community benefits from having individuals with disabilities present in our public spaces and community events. People with disabilities have so much to offer, from their skills to their personalities, that enrich the lives of all around them.

Why Adjustable Height?

There are two types of adult changing tables: Fixed height, and adjustable height. With fixed height tables, many caregivers will lack the strength to lift their loved one up onto the table. The table is useless if they can't get on top of it. To prevent injuries, adjustable height tables can be lowered for the transfer and raised up for diaper changing.

Locations to Install Universal Changing Tables:

Shopping Malls
Parks/Playgrounds
Arenas/stadiums (sports and concerts)
Museums
Airports
Schools
Adaptive sports fields
YMCAs and Community Centers
Zoos/Aquariums
Highway rest stops
(this allows for travel throughout the state)

State fairgrounds
Hospitals and medical offices
Water parks, public pools
Amusement Parks
Science centers
Movie theaters
Tourist Attractions



This fixed-height table is too high to climb onto, and it is very hard for caregivers to lift adult loved ones.

Contact:

www.ChangingSpacesCampaign.com



CHANGING SPACES CAMPAIGN

Requirements For Universal Changing Stations
Everyone Deserves Dignity

Adult Changing Tables Will Soon be Required

To address the lack of adult changing stations in the community, the International Code Council (ICC) A117 committee established a task group including ADA experts, advocates/caregivers, code officials, suppliers of the tables, and architects to develop **code change** (approved to be included in the 2024 International Building Code (IBC)) and **specifications** (published as part of the next edition of the ICC A117.1 accessibility standard in 2023).

Where Will Adult Changing Tables Be Required?

The following locations will be required to install Universal changing tables according to the 2024 IBC.

- Assembly and mercantile locations that require a total of 6 or more male and female water closets. (Including, but not limited to movie theaters, concert halls, banquet halls, casinos, swimming pools, lecture halls, museums, places of worship, arenas, skating rinks, stadiums, amusement parks, airports, department stores, shopping malls, etc.)
- College or university business occupancies, where an aggregate of 12 or more male and female water closets/urinals are provided on any floor in a building.
- Elementary & high school educational occupancies with an assembly use, where 6 or more male and female water closets is required for that assembly use. (e.g., high school basketball gymnasiums where the number of occupants in the seating would require 6 or more water closets).
- Highway rest stops and service plazas (e.g., the rest stops provided directly on the major highway — not the rest stops at exits).
- Located such that a person is no more than two stories above or below the story with the adult changing station and the accessible path of travel to such a facility shall not exceed 2000 feet. In large facilities, such as airports or sports arenas, this would be an adult changing station in approximately half of the family/assisted use toilet rooms.
- The required accessible routes to adult changing stations shall not pass through security checkpoints.

Changing Table and Restroom Specifications

The following specifications will be included in the ICC A117.1 accessibility standard in 2023.

- The adult changing table may be located in single user, multi-user, family, assisted use toilet or bathing rooms. If located in multi-user toilet rooms, privacy must be provided.
- The changing surface must be at least 70 in. X 30 in.
- The changing surface must be height-adjustable from at least 17 in. to 38 in. above the floor.
- There must be at least 36 in. of clearance on the long side of the table, and 36 in. on one short side of the table.
- The changing table must include a side rail for safety, a minimum of $\frac{2}{3}$ the length of the changing surface and centered. Rail must be capable of being raised and lowered, with it locking in the raised position. It must extend at least 5 in. above the surface of the table.
- Safety belts are highly recommended for the safety of individuals who move or have seizures.

Contact:

www.ChangingSpacesCampaign.com



CHANGING SPACES CAMPAIGN

Universal Changing Stations In The Building Code

The following requirements for Adult Changing Stations were finalized by The International Code Committee in May 2022.

Changing surface – 70 in minimum in length and 30 in minimum width

Clearances – measured when in operational position

Side – 36 in deep minimum clearance along length and at one end of the table

Height adjustable – 17 in minimum to 38 in maximum as measured between the floor and the surface of the table

Capacity – allowable stresses for materials, fastening mounting devices, and support structure shall support a downward force of not less than 400 lbs applied to any point on the changing surface

Changing surface – comprised of non-porous and durable materials

Side rail – minimum 2/3 length of table and centered along the length of open side of table

When raised, lock into position and at least 5 in above surface of table

When lowered, should not be in way of transferring individual

Single use rooms (such as a family/companion care bathroom) must contain:

Dispenser for soap

Hand towel dispenser or hand dryer

Coat hook located in proximity to the changing surface

Waste receptacle

Signage indicating Adult changing station provided at entrance to the room

Multi-user toilet or bathing rooms

In addition to what is listed above, privacy must be provided by walls, curtains or partitions enclosing the compartment.

Adult changing station and its supporting structure shall not obstruct required clear floor spaces and clearances at accessible elements, maneuvering clearances at doors, or the wheelchair turning space.

Here is one example of a restroom layout.

